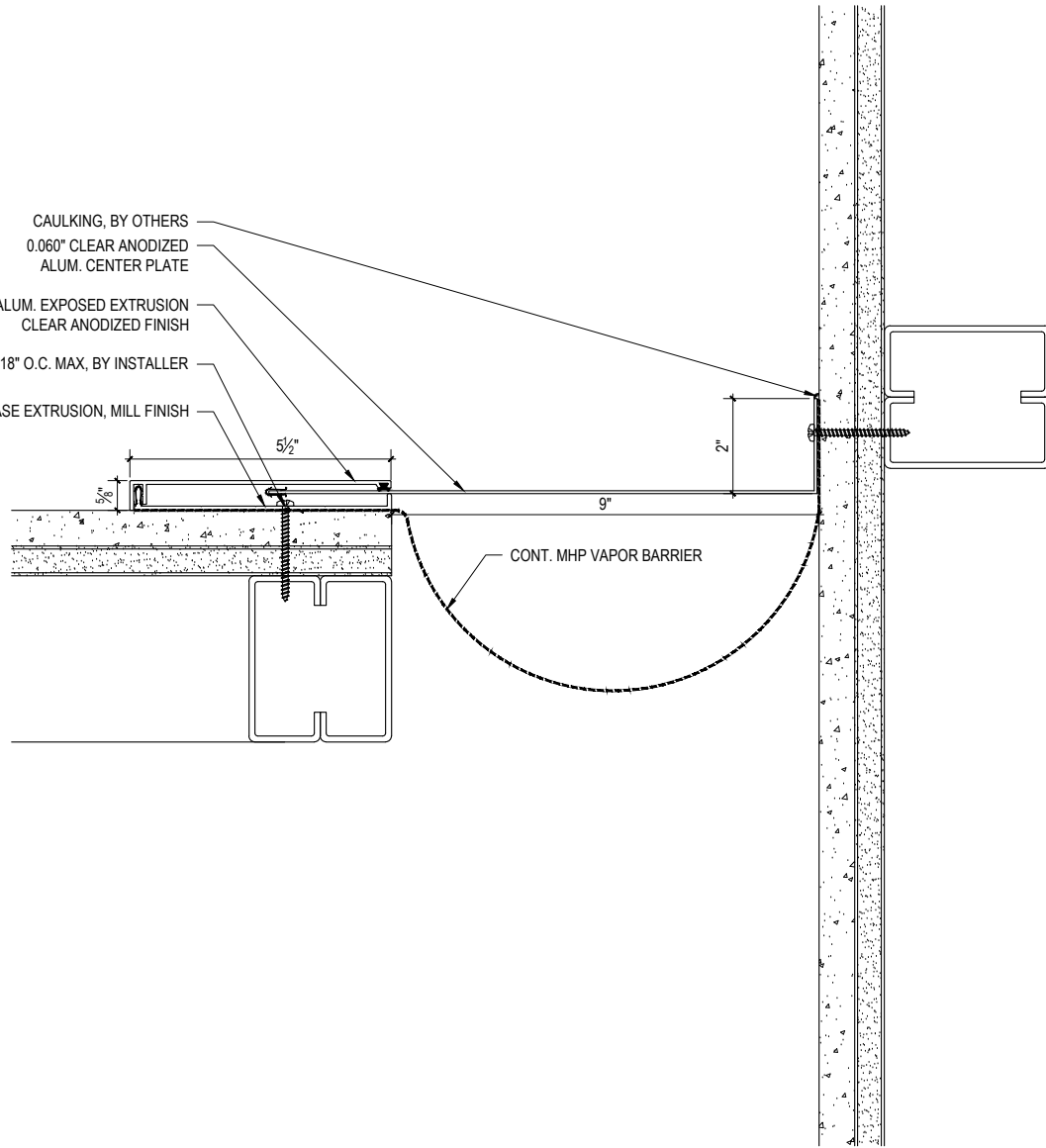


CAULKING, BY OTHERS  
 0.060" CLEAR ANODIZED  
 ALUM. CENTER PLATE  
 CONT. ALUM. EXPOSED EXTRUSION  
 CLEAR ANODIZED FINISH  
 FASTENER @ 18" O.C. MAX, BY INSTALLER  
 CONT. BASE EXTRUSION, MILL FINISH



SCALE: 3"=1'-0"



**M.H. POWELL & CO., INC.**  
 ARCHITECTURAL SEISMIC EXPANSION JOINT SYSTEMS

2313 YATES AVENUE | PHONE : (323) 887-0037  
 COMMERCE, CA 90040 | FAX : (323) 887-0877  
 WEB : www.mhpowell.net

**MODEL**  
**KFM-9-2.5**  
 WALL/CEILING CORNER EJC

PROJECT : \_\_\_\_\_ PROJECT # : \_\_\_\_\_  
 LOCATION : \_\_\_\_\_ DATE : \_\_\_\_\_  
 ARCHITECT : \_\_\_\_\_  
 CUSTOMER : \_\_\_\_\_

PAGE #